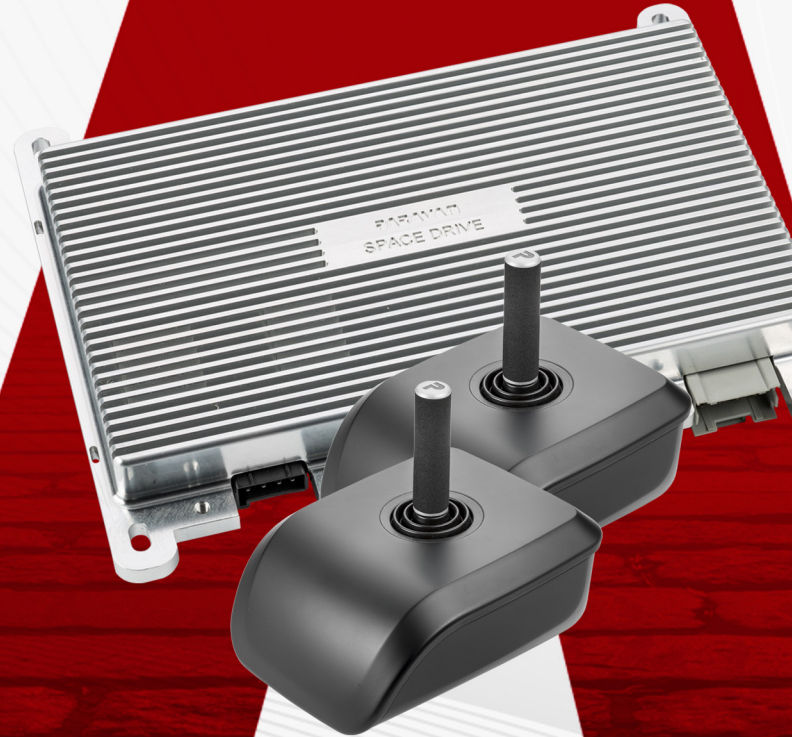




*PARAVAN SPACE DRIVE SYSTEM*

*Maintenance manual*  
**PRIMARY FUNCTIONS**



 **EN/US** v3.0

Valid for the following models:	Space Drive II System
Publisher and copyright:	PARAVAN GmbH
Date of issue:	01.07.2022
Document number:	SD_WA_V3_EN_US

Dear Customer

Thank you for choosing our PARAVAN SPACE DRIVE II driving system. This maintenance manual includes all the important information and instructions for maintaining your PARAVAN SPACE DRIVE II driving system. Please keep this maintenance manual in your vehicle for later documentation. Please contact us at any time when you have any questions concerning the maintenance of your PARAVAN SPACE DRIVE II driving system.

**Drive safely!**

Your PARAVAN team

# Table of contents

## General

<b>1.</b>	<b>General information regarding the maintenance plan.....</b>	<b>6</b>
1.1	General information regarding maintenance work.....	7
1.1.1	Technical maintenance status.....	7

## Technology

<b>2.</b>	<b>Proof of maintenance 1 .....</b>	<b>8</b>
2.1	Maintenance after 12 months or 300 hours .....	8
2.1.1	Maintenance work .....	9
<b>3.</b>	<b>Proof of maintenance 2 .....</b>	<b>10</b>
3.1	Maintenance after 24 months or 600 hours .....	10
3.1.1	Maintenance work .....	11
<b>4.</b>	<b>Proof of maintenance 3 .....</b>	<b>12</b>
4.1	Maintenance after 3 years or 900 hours .....	12
4.1.1	Maintenance work .....	13
<b>5.</b>	<b>Proof of maintenance 4 .....</b>	<b>14</b>
5.1	Maintenance after 4 years or 1200 hours .....	14
5.1.1	Maintenance work .....	15
<b>6.</b>	<b>Proof of maintenance 5 .....</b>	<b>16</b>
6.1	Maintenance after 5 years or 1500 hours .....	16
6.1.1	Maintenance work .....	17
<b>7.</b>	<b>Proof of maintenance 6 .....</b>	<b>18</b>
7.1	Maintenance after 6 years or 1800 hours .....	18
7.1.1	Maintenance work .....	19



<b>8.</b>	<b>Proof of maintenance 7 .....</b>	<b>20</b>
8.1	Maintenance after 4 years or 2100 hours .....	20
8.1.1	Maintenance work .....	21
<b>9.</b>	<b>Proof of maintenance 8 .....</b>	<b>22</b>
9.1	Maintenance after 8 years or 2400 hours .....	22
9.1.1	Maintenance work .....	23
<b>10.</b>	<b>Proof of maintenance 9 .....</b>	<b>24</b>
10.1	Maintenance after 9 years or 2700 hours .....	24
10.1.1	Maintenance work .....	25
<b>11.</b>	<b>Proof of maintenance 10 .....</b>	<b>26</b>
11.1	Maintenance after 10 years or 3000 hours .....	26
11.1.1	Maintenance work .....	27

# 1. **General information regarding the maintenance plan**

You must arrange regular inspection of your PARAVAN driving system and your vehicle by an authorized workshop or service technician to ensure fault-free operation of your SPACE DRIVE II driving system.



Strictly adhere to the maintenance intervals prescribed to be able to make full use of services in warranty or goodwill cases.

The service technicians must enter the current status of the vehicle and system parameters on the following pages of the maintenance certificate at each visit:

- > Software version SPACE DRIVE II
- > Operating hours SPACE DRIVE II
- > Kilometers / Miles driven by vehicle

These entries are proof that the maintenance intervals have been adhered to.

## **PARAVAN GmbH recommends:**



Exchange the complete PARAVAN SPACE DRIVE II driving system after 10 years or 3000 hours (depending on what occurs first).

## 1.1 General information regarding maintenance work

In some cases, appropriate maintenance and repair requires access to the original manufacturer information of the vehicle manufacturer and the workshop documentation.



Only persons trained or instructed by PARAVAN GmbH or service technicians may perform maintenance and repair work on a vehicle with a PARAVAN SPACE DRIVE II driving system.

The results of the maintenance work must be documented in the table and applicable fields must be checked. Any remedial work required is documented in the "Comments" column. Service staff must confirm appropriate performance of the maintenance work by providing a date, signature and workshop stamp.

### 1.1.1 Technical maintenance status



All maintenance work in the maintenance instructions corresponds to the state as at the editorial deadline in June 2014.



The maintenance instructions for the PARAVAN SPACE DRIVE II driving system were compiled in German and may be translated into other languages. The German version is legally binding in the event of any discrepancies.

## 2. Proof of maintenance 1

### 2.1 Maintenance after 12 months or 300 hours



The maintenance interval is 300 hours or 12 months, whichever occurs earlier.

Work may only be performed by trained SPACE DRIVE technicians!

#### 1. Maintenance (service) (1st year of operation / 300 operating hours)

Software version SPACE DRIVE II: \_\_\_\_\_

Operating hours SPACE DRIVE II: \_\_\_\_\_ h

Kilometers driven by vehicle: \_\_\_\_\_ km



### 2.1.1 Maintenance work

	OK	Not OK	Remarks
Read and store error memory			
Check software status and update as required			
Visual control of all cables and plug connections			
Visual control of all mechanical components			
Visual control of all input devices incl. cables			
Functional test and test drive by trained technicians			
Test drive by customer jointly with a trained technician			
Adaptation of the customer parameters as required			
Functional test of all secondary functions			

Workshop stamp

Date: \_\_\_\_\_

Signature: \_\_\_\_\_

### 3. Proof of maintenance 2

#### 3.1 Maintenance after 24 months or 600 hours



The maintenance interval is 300 hours or 12 months, whichever occurs earlier.

Work may only be performed by trained SPACE DRIVE technicians!

2. Maintenance (service) (2nd year of operation / 600 operating hours)

Software version SPACE DRIVE II: \_\_\_\_\_

Operating hours SPACE DRIVE II: \_\_\_\_\_ h

Kilometers driven by vehicle: \_\_\_\_\_ km

### 3.1.1 Maintenance work

	OK	Not OK	Remarks
Read and store error memory			
Check software status and update as required			
Visual control of all cables and plug connections			
Visual control of all mechanical components			
Visual control of all input devices incl. cables			
Functional test and test drive by trained technicians			
Test drive by customer jointly with a trained technician			
Adaptation of the customer parameters as required			
Functional test of all secondary functions			

Workshop stamp

Date: \_\_\_\_\_

Signature: \_\_\_\_\_

## 4. Proof of maintenance 3

### 4.1 Maintenance after 3 years or 900 hours



The maintenance interval is 300 hours or 12 months, whichever occurs earlier.

Work may only be performed by trained SPACE DRIVE technicians!

#### 3. Maintenance (service) (3rd year of operation / 900 operating hours)

Software version SPACE DRIVE II: \_\_\_\_\_

Operating hours SPACE DRIVE II: \_\_\_\_\_ h

Kilometers driven by vehicle: \_\_\_\_\_ km



### 4.1.1 Maintenance work

	OK	Not OK	Remarks
Read and store error memory			
Check software status and update as required			
Visual control of all cables and plug connections			
Visual control of all mechanical components			
Visual control of all input devices incl. cables			
Functional test and test drive by trained technicians			
Test drive by customer jointly with a trained technician			
Adaptation of the customer parameters as required			
Functional test of all secondary functions			

Workshop stamp

Date: \_\_\_\_\_

Signature: \_\_\_\_\_

## 5. Proof of maintenance 4

### 5.1 Maintenance after 4 years or 1200 hours



The maintenance interval is 300 hours or 12 months, whichever occurs earlier.

Work may only be performed by trained SPACE DRIVE technicians!

4. Maintenance (service) (4th year of operation / 1200 operating hours)

Software version SPACE DRIVE II: \_\_\_\_\_

Operating hours SPACE DRIVE II: \_\_\_\_\_ h

Kilometers driven by vehicle: \_\_\_\_\_ km

### 5.1.1 Maintenance work

	OK	Not OK	Remarks
Read and store error memory			
Check software status and update as required			
Visual control of all cables and plug connections			
Visual control of all mechanical components			
Visual control of all input devices incl. cables			
Functional test and test drive by trained technicians			
Test drive by customer jointly with a trained technician			
Adaptation of the customer parameters as required			
Functional test of all secondary functions			

Workshop stamp

Date: \_\_\_\_\_

Signature: \_\_\_\_\_

General

Information

Prepare

Operate

Help

Technology

## 6. Proof of maintenance 5

### 6.1 Maintenance after 5 years or 1500 hours



The maintenance interval is 300 hours or 12 months, whichever occurs earlier.

Work may only be performed by trained SPACE DRIVE technicians!

5. Maintenance (service) (5th year of operation / 1500 operating hours)

Software version SPACE DRIVE II: \_\_\_\_\_

Operating hours SPACE DRIVE II: \_\_\_\_\_ h

Kilometers driven by vehicle: \_\_\_\_\_ km



### 6.1.1 Maintenance work

	OK	Not OK	Remarks
Read and store error memory			
Check software status and update as required			
Visual control of all cables and plug connections			
Visual control of all mechanical components			
Visual control of all input devices incl. cables			
Functional test and test drive by trained technicians			
Test drive by customer jointly with a trained technician			
Adaptation of the customer parameters as required			
Functional test of all secondary functions			

Workshop stamp

Date: \_\_\_\_\_

Signature: \_\_\_\_\_

General

Information

Prepare

Operate

Help

Technology

## 7. Proof of maintenance 6

### 7.1 Maintenance after 6 years or 1800 hours



The maintenance interval is 300 hours or 12 months, whichever occurs earlier.

Work may only be performed by trained SPACE DRIVE technicians!

6. Maintenance (service) (6th year of operation / 1800 operating hours)

Software version SPACE DRIVE II: \_\_\_\_\_

Operating hours SPACE DRIVE II: \_\_\_\_\_ h

Kilometers driven by vehicle: \_\_\_\_\_ km

### 7.1.1 Maintenance work

	OK	Not OK	Remarks
Read and store error memory			
Check software status and update as required			
Visual control of all cables and plug connections			
Visual control of all mechanical components			
Visual control of all input devices incl. cables			
Backup battery exchange			
Functional test and test drive by trained technicians			
Test drive by customer jointly with a trained technician			
Adaptation of the customer parameters as required			
Functional test of all secondary functions			

Workshop stamp

Date: \_\_\_\_\_

Signature: \_\_\_\_\_

General

Information

Prepare

Operate

Help

Technology

## 8. Proof of maintenance 7

### 8.1 Maintenance after 4 years or 2100 hours



The maintenance interval is 300 hours or 12 months, whichever occurs earlier.

Work may only be performed by trained SPACE DRIVE technicians!

7. Maintenance (service) (7th year of operation / 2100 operating hours)

Software version SPACE DRIVE II: \_\_\_\_\_

Operating hours SPACE DRIVE II: \_\_\_\_\_ h

Kilometers driven by vehicle: \_\_\_\_\_ km



### 8.1.1 Maintenance work

	OK	Not OK	Remarks
Read and store error memory			
Check software status and update as required			
Visual control of all cables and plug connections			
Visual control of all mechanical components			
Visual control of all input devices incl. cables			
Functional test and test drive by trained technicians			
Test drive by customer jointly with a trained technician			
Adaptation of the customer parameters as required			
Functional test of all secondary functions			

Workshop stamp

Date: \_\_\_\_\_

Signature: \_\_\_\_\_

## 9. Proof of maintenance 8

### 9.1 Maintenance after 8 years or 2400 hours



The maintenance interval is 300 hours or 12 months, whichever occurs earlier.

Work may only be performed by trained SPACE DRIVE technicians!

8. Maintenance (service) (8th year of operation / 2400 operating hours)

Software version SPACE DRIVE II: \_\_\_\_\_

Operating hours SPACE DRIVE II: \_\_\_\_\_ h

Kilometers driven by vehicle: \_\_\_\_\_ km

### 9.1.1 Maintenance work

	OK	Not OK	Remarks
Read and store error memory			
Check software status and update as required			
Visual control of all cables and plug connections			
Visual control of all mechanical components			
Visual control of all input devices incl. cables			
Functional test and test drive by trained technicians			
Test drive by customer jointly with a trained technician			
Adaptation of the customer parameters as required			
Functional test of all secondary functions			

Workshop stamp

Date: \_\_\_\_\_

Signature: \_\_\_\_\_

General

Information

Prepare

Operate

Help

Technology

## 10. Proof of maintenance 9

### 10.1 Maintenance after 9 years or 2700 hours



The maintenance interval is 300 hours or 12 months, whichever occurs earlier.

Work may only be performed by trained SPACE DRIVE technicians!

9. Maintenance (service) (9th year of operation / 2700 operating hours)

Software version SPACE DRIVE II: \_\_\_\_\_

Operating hours SPACE DRIVE II: \_\_\_\_\_ h

Kilometers driven by vehicle: \_\_\_\_\_ km

### 10.1.1 Maintenance work

	OK	Not OK	Remarks
Read and store error memory			
Check software status and update as required			
Visual control of all cables and plug connections			
Visual control of all mechanical components			
Visual control of all input devices incl. cables			
Functional test and test drive by trained technicians			
Test drive by customer jointly with a trained technician			
Adaptation of the customer parameters as required			
Functional test of all secondary functions			

Workshop stamp

Date: \_\_\_\_\_

Signature: \_\_\_\_\_



# 11. Proof of maintenance 10

## 11.1 Maintenance after 10 years or 3000 hours

PARAVAN GmbH recommends:



Replacement of the complete  
PARAVAN SPACE DRIVE II driving system after 10 years or 3000 h.



The maintenance interval is 300 hours or 12 months, whichever occurs earlier.

Work may only be performed by trained SPACE DRIVE technicians!

10. Maintenance (service) (10th year of operation / 3000 operating hours)

Software version SPACE DRIVE II: \_\_\_\_\_

Operating hours SPACE DRIVE II: \_\_\_\_\_ h

Kilometers driven by vehicle: \_\_\_\_\_ km

### 11.1.1 Maintenance work

	OK	Not OK	Remarks
Read and store error memory			
Check software status and update as required			
Visual control of all cables and plug connections			
Visual control of all mechanical components			
Visual control of all input devices incl. cables			
Functional test and test drive by trained technicians			
Test drive by customer jointly with a trained technician			
Adaptation of the customer parameters as required			
Functional test of all secondary functions			

Workshop stamp

Date: \_\_\_\_\_

Signature: \_\_\_\_\_

General

Information

Prepare

Operate

Help

Technology















*PARAVAN SPACE DRIVE SYSTEM*

*Maintenance manual*  
***PRIMARY FUNCTIONS***

ORIGINAL MANUAL



**Paravan GmbH**

Paravanstraße 5-10  
72539 Pfronstetten-Aichelau  
Deutschland

Telefon: +49 (0) 73 88 / 99 95-60  
Fax: +49 (0) 73 88 / 99 95-999  
Email: [info@paravan.de](mailto:info@paravan.de)

**[www.paravan.com](http://www.paravan.com)**